



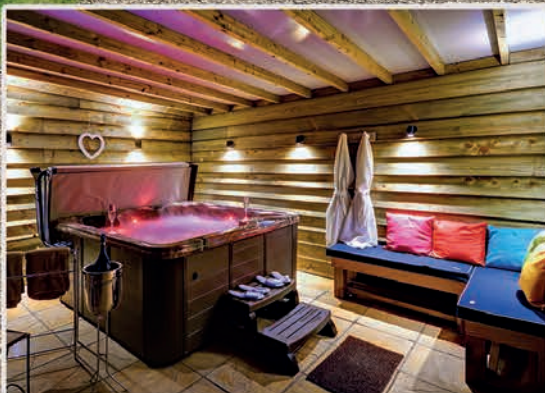
Woodfarm Life

Stay. Relax. Share. Repeat

Woodfarm
Barns & Barges

*Hundreds of 5-Star reviews on
Tripadvisor, Facebook & Google*

**Your guide to our Dog-Friendly
Holiday Barns, Cottages & Barges
in Suffolk and Tuscany!**



As featured in The Times, The Mail on Sunday, BBC, ITV & LBC



Allow us to introduce ourselves, tell you *what* we are all about, *why* you might want to stay, and *when* you can.

What?

Dog-Friendly Holiday accommodation in Suffolk & Tuscany. We welcome up to three dogs in each Barn, Cottage and Barge.

Barns and Cottages

Deep in the heart of the Suffolk countryside, just outside Stonham Aspal, we have eight luxurious Suffolk Barns and Cottages, each sleeping two guests. Each Barn features a fully equipped kitchen, lounge (with a wood burner or open fire), dining room, bathroom and luxury bedroom. Most have their own private hot tubs.

Each Barn and Cottage has its own fully enclosed garden, and we also have a fully enclosed two-acre meadow for dogs to socialise and run around. Each of the Barns and Cottages has a Doggy Shower Station!

We are within easy striking distance of all the popular coastal destinations, and perfectly located for the historic wool towns.

Barges

We have two unique, historic Dutch Barges, converted into fabulous Dog-Friendly 'Floating Holiday Cottages', with free WiFi and bicycle use.

'Twee Gebroeders' is moored on the Quay in historic Woodbridge. The Barge sleeps up to two adults and two children, and offers a perfect romantic getaway, so much so that she featured in The Times in an article on 'Love Nests'.

'Onderneming' is an iconic sight at the world-famous Snape Maltings music and arts venue, and sleeps up to eight adults and two children. She also featured in The Times in their 'Best Unusual Holiday Homes' article.

Tuscany, Northern Italy

Imagine yourself as the sun goes down, sipping a nice glass of Chianti, gazing across the valley from your Tuscan terrace, waiting for your dinner to come out of your pizza oven.

Having established the Woodfarm brand in Suffolk, we hopped across the sea and found a little house called 'Trebio', located on a lush green hillside less than an hour by car from Pisa, and just 20 minutes from Lucca.

The little place with BIG views, Trebio is our dog-friendly country place in a tiny hamlet called Piazza Di Brancoli. It's a classic Tuscan farmhouse, sleeping two guests. It has air-conditioning and all the modern bits and bobs you could wish for.

Why?

If you are reading this magazine from the comfort of your Woodfarm break, then you may already know what we're about. However, if this magazine has been popped under your nose by a friend, we hope you'll consider Woodfarm when booking your next holiday.

- Hundreds of Five Star TripAdvisor, Facebook and Google reviews
- Known as the private hot tubs place
- Visit England Gold Awards
- We don't simply tolerate your dogs; we welcome them
- We have a fully enclosed two-acre meadow for dogs at Woodfarm Barns
- A reputation built over a decade of making our guests happy

When?

- Two or Three night weekends from Fridays
- Four night midweek breaks from Mondays
- Five night midweek breaks from Sundays
- Full weeks from any of those days

You can book at any time using our online calendars at: woodfarmbarns.com



Welcome!



Welcome to 'Woodfarm Life'.

We've called it 'Woodfarm Life' as it's been my life since 2009 when I started the business, and since then, thousands of guests seem to have enjoyed making it a part of theirs for a little while too.

It may sound corny, but this is all I've ever done from the beginning:

- Establish somewhere that I personally want to stay
- Encourage you to do the same
- Provide you with comfortable, cosy accommodation
- Think of every last little detail to ensure you love your stay. It's what we're known for
- Help you tap into everything that is great about Suffolk, and now Tuscany
- Exceed your expectations so you want to stay again, and recommend us to your family and friends

It's a simple philosophy that has seen my business grow year on year over our first decade, and earned us multiple Gold Awards along the way. We've been on the telly and the radio quite a bit, as well as in national newspapers and magazines, and have attracted hundreds of Five Star reviews on TripAdvisor, Facebook and Google.

I'm so lucky to have an amazing team around me, from our housekeepers and maintenance crew, to our tech and web guys, most of whom have been with me for many years. There's no way I could have done all of this by myself.

I'm also incredibly blessed to have scores of guests who return time and time again, with many becoming great friends. It's always a genuine pleasure seeing guests return, and knowing that they do so because they love it. That's a great feeling.

OK, that's all very well, but what does it really mean to you?

It simply means we work hard to offer you the very best experience, whether it's a short break or a longer holiday. Our awards and reviews demonstrate that the natural culture within our business ensures that we consistently hit the mark for our guests.

This little publication gives you an insight into our Barns, Cottages and Barges, some handy info, and the things you can do while you're with us. Please keep this magazine. If you would like an extra copy or two for friends, just ask.

Thank you for reading,

Carl Scott

CONTENTS

Page 4	Woodfarm House
Page 5	Meadow View Cottage
Page 6	The Granary Barn
Page 7	Alde Barn
Page 8	Deben Barn
Page 9	Gipping Barn
Page 10	Orwell Barn
Page 11	Stour Barn
Page 12	Onderneming
page 13	Twee Gebroeders
Page 14	Trebbio, Tuscany
Page 16	Suffolk Towns and Villages
Page 18	Woodbridge and Snape
Page 19	Areas of Outstanding Natural Beauty
Page 20	Your Home from Home
Page 22	Local Walks
Page 23	Dog Friendly Beaches
Page 24	Eat, Drink & be Merry!
Page 26	Preferred Partners
Page 27	Woodfarm Merchandise

Woodfarm Barns

Woodfarm House

SLEEPS 2

See our Barns website for videos and further photos



Woodfarm House is our flagship dog-friendly holiday cottage in Suffolk. A cosy, thatched, 15th Century country home with its own Private Hot Tub.

Full of character and atmosphere, with huge fully appointed, traditional farmhouse kitchen, including a feature cast iron range cooker as its centrepiece.

A large, oak-beamed lounge, with inglenook fireplace and squishy sofas, leads through to your dining room. Upstairs you'll find a king-sized bed, dressing room, and bathroom with a 'Ball & Claw' footed roll-top bath.

FEATURES

- Thatched 500 year old Farmhouse Cottage
- Private Hot Tub in Covered Garden Room
- King-Sized Bed
- Dressing Room
- Roll-Top 'Ball & Claw' bath
- Sumptuous Lounge with Open Fire
- Dining Room
- Farmhouse Kitchen
- Courtyard Garden
- Canine Shower Station
- Off-Road Parking
- Free Wi-Fi
- Free Bike Use



"A week in the beautiful Woodfarm House feels like we've stepped back in time. Spent time playing games in front of the fire. A very restful break. Thank you."

Simon and Debbie

Woodfarm Barns
Meadow View Cottage

SLEEPS 2

See our Barns website for videos and further photos



FEATURES

- Thatched 500 year old Farmhouse Cottage
- Private Hot Tub in Covered Garden Room
- King-Sized Bed
- Wet Room with Rainfall Shower
- Opulent Lounge with Inglenook Fireplace
- Large Fully-Enclosed Garden
- Dining Room
- Fully-Appointed Kitchen
- Canine Shower Station
- Off-Road Parking
- Free Wi-Fi
- Free Bike Use

Meadow View Cottage is our hidden gem. A romantic, thatched cottage with a wealth of oak beams and bags of character.

Your Private Hot Tub is nestled into the trees at the foot of your large, fully-enclosed garden, with magical views back towards your cosy retreat.

Tucked away on the edge of Woodfarm, Meadow View Cottage is your secluded Suffolk hideaway. A spacious lounge with with a beautiful inglenook fireplace and open oak-studded walls, leads through to your kitchen/ dining room, and shower 'wet' room with its large walk-in 'rainfall' shower. Upstairs is your bedroom with king-sized bed.

"A delightful beautiful cottage, full of charm. We had a wonderful weekend, relaxing and enjoying being away from it all. Everything was perfect from the welcome basket to the dog treats. Thank you."

Jane and Andy



Woodfarm Barns The Granary Barn

SLEEPS 2

See our Barns website for videos and further photos



This beautiful converted grain barn, dating back over 300 years is our original romantic cottage for couples. Huge enclosed garden and wonderful oak feature window with breath-taking farmland views.

Exposed original oak beams throughout and a winding, handmade timber staircase; the Granary is full of old-world charm. Adorned with antiques, yet combined with all the modern comforts you could wish for.

Open-plan ground floor with lounge-diner and galley kitchen. Comfy sofa in front of the fire. First floor bedroom with en-suite shower room.

FEATURES

- 300 Year-Old Grain Barn Conversion
- Fully Enclosed Garden with Patio & BBQ
- Double Bedroom
- En-Suite Shower Room
- Fully Equipped Kitchen
- Wood-Burning Stove
- Canine Shower Station
- Private Off-Road Parking
- Free Wi-Fi
- Free Bike Use



"Another fantastic week in the Granary Barn. We love it here and will be back to visit all the hidden treasures Suffolk has to offer. Charlie loved his dog treats as usual!"

Daphne and Tim

Woodfarm Barns Alde Barn

SLEEPS 2

See our Barns website for videos and further photos



FEATURES

- Large, Fully Enclosed Garden with Patio & BBQ
- Private Hot Tub in covered Garden Room
- Double Mezzanine Bedroom
- Fully Equipped Kitchen
- Wood-Burning Stove
- Downstairs Shower Room and WC
- Canine Shower Station
- Off-Road Parking
- Free Wi-Fi
- Free Bike Use

Our 'Hansel & Gretel' chocolate box cottage! Gorgeous old wooden sleigh bed on the bedroom mezzanine, overlooking the lounge. A really cosy, romantic cottage and perfect for dogs with its large garden.

Fully fitted farmhouse style kitchen-diner with Belfast sink, ancient Welsh dresser and antique dining table. Squishy sofa in the lounge, antique features and low lighting, Alde Barn is set back on its own opposite the Koi pond.

High-vaulted ceilings with huge oak beams and a winding, handmade timber staircase. Well-organised shower room downstairs. Log-burning stove.

*"We came for our honeymoon and on arrival "happy tears" over the attention to detail, treats for our dog, postcards already stamped! We made good use of the BBQ and the Hot Tub.
Can't wait to come back again."*

Tracey and Matt



Woodfarm Barns Deben Barn

SLEEPS 2

See our Barns website for videos and further photos



Coach House Style Barn with your own luxurious, private Hot Tub on the patio. A wonderful, quirky old antique cast iron bed. En-suite shower room.

Spacious open-plan farmhouse style kitchen-lounge-diner with a comfy, squishy sofa and pretty antique pine table. High vaulted ceiling with huge oak beams, giving it a roomy atmosphere which is beautifully lit up in the evening by the log burning fire.

All on the ground floor, so suitable for those who prefer everything on one level. And only two steps up into your Hot Tub!

FEATURES

- Large, Fully Enclosed Garden with Patio & BBQ
- Private Hot Tub
- Double ground floor Bedroom
- Fully Equipped Kitchen
- Wood-Burning Stove
- Downstairs Shower Room and WC
- Canine Shower Station
- Off-Road Parking
- Free Wi-Fi
- Free Bike Use



“Deben Barn was an ideal location to stay and we had a lovely weekend in the Barn. We enjoyed the breakfast hamper and the dogs loved theirs too! We visited Orford Castle and Thorpeness, which are fascinating.”

Pam and Phil

Woodfarm Barns Gipping Barn

SLEEPS 2

See our Barns website for videos and further photos



FEATURES

- Fully Enclosed Garden with Patio & BBQ
- Private Hot Tub in covered Garden Room
- Double Mezzanine Bedroom
- Fully Equipped Kitchen
- Wood-Burning Stove
- Downstairs Shower Room and WC
- Canine Shower Station
- Off-Road Parking
- Free Wi-Fi
- Free Bike Use

Sheer luxury with your own private Hot Tub in a covered garden room awaits you in Gipping Barn. Mezzanine double bedroom with a wonderful wooden sleigh bed.

Your fully equipped kitchen-diner overlooks the hot tub and features an antique kitchen dresser and oak table. The lounge has huge high ceilings with oak timbers and a comfy leather sofa opposite the wood-burner.

Your downstairs shower room leads off the lounge and a hand-made wooden staircase winds up to the mezzanine. There is also a good sized enclosed dog-friendly garden.

“Our third time in Gipping Barn and it still doesn’t disappoint. Snape Maltings and Aldeburgh are favourite places and we also visited Leiston Abbey. Thank you to the WFB Team from us and the dogs.”

Marie and Simon



Woodfarm Barns Orwell Barn

SLEEPS 2

See our Barns website for videos and further photos



Your own private Hot Tub situated in a covered garden room is a key feature of Orwell Barn. And then you have wonderful views of the landscaped gardens from your Mezzanine Bedroom.

Your fully equipped kitchen-diner overlooks the hot tub and features an antique pine plate rack and painted dresser. The lounge has huge high ceilings with oak timbers and a comfy leather sofa opposite the wood-burner.

Your downstairs shower room leads off the lounge and a hand-made wooden staircase winds up to the mezzanine.

FEATURES

- Fully Enclosed Garden with Patio & BBQ
- Private Hot Tub in covered Garden Room
- Double Mezzanine Bedroom
- Fully Equipped Kitchen
- Wood-Burning Stove
- Downstairs Shower Room and WC
- Canine Shower Station
- Off-Road Parking
- Free Wi-Fi
- Free Bike Use



"Our second visit, Orwell Barn is just perfect. Great walks at Needham Lake, Thornham Walks and Minsmere Reserve with our dog. Keep up the good work Carl, you are doing a great job."

Brenda and Mike

Woodfarm Barns Stour Barn

SLEEPS 2

See our Barns website for videos and further photos



FEATURES

- Fully Enclosed Garden with Patio & BBQ
- Private Hot Tub in covered Garden Room
- Double Ground Floor Bedroom
- Fully Equipped Kitchen
- Wood-Burning Stove
- Downstairs Shower Room and WC
- Canine Shower Station
- Off-Road Parking
- Free Wi-Fi
- Free Bike Use

A Coach House Style Barn with your own private, covered Garden Room featuring a large luxurious Hot Tub, as well as a big round dining table and comfy chairs.

A 'Bed-knobs & Broomsticks' style bed and a beautiful hand-painted antique chest of drawers. En-suite shower room. Spacious open plan farmhouse style kitchen-lounge-diner with a comfy leather sofa and pretty antique pine table. High vaulted ceilings with heavy oak beams give your barn a roomy yet cosy feel.

Wood-burning stove. This barn is wheelchair-friendly.

"Yet another wonderful time here at Stour Barn. We love the Hot Tub and our dog loves "Woof-farm Meadow". We had lovely visits to Needham Lake, Dunwich and the Suffolk Punch Trust. All very dog-friendly."

Gail and Allen



Woodfarm Barges Onderneming

(Enterprise in English)

SLEEPS 8

See our Barges website for videos and further photos



Moored on the River Alde at Snape Maltings, near Aldeburgh. A stones throw from great pubs and a range of boutique shops. Perfect for families and small groups of friends seeking a unique getaway, with stunning views and great walks.

Built in 1899, she measures 94ft in length and offers guests spacious but cosy accommodation. She sleeps 6 comfortably in three double bedrooms but also has a comfy double sofa-bed and a kids' den.

This magnificent Barge features many historic features, including all her original portholes. Two fully fitted galley kitchen / living / dining areas, and three bathrooms. Fabulous river walks right from the quay.

FEATURES

- High Ceilings
- 3 Double Bedrooms
- Kids' Den
- 3 Bathrooms (1 En-Suite)
- Bespoke Timber Panelling
- Many Original Features
- 2 Large Saloons (Lounge, Kitchen, Dining Areas)
- 2 Fully Fitted Kitchens
- Log Burning Stove
- Central Heating
- Iconic Suffolk Location
- Year-Round Accommodation
- Free Wi-Fi & Bike Use

"Onderneming and Snape Maltings exceeded all our expectations. Such a perfect setting for this amazing Barge. Loving the whole area and the very dog-friendly vibe. We'll be back!"

Dev, Dave, Jo, Martin, Lynne, and Les



Woodfarm Barges

Twée Gebroeders

(Two brothers in English)

SLEEPS 2+2

See our Barges website for videos and further photos



FEATURES

- Double Cabin bedroom
- Twin Cabin Bedroom
- Shower Room with Hand-Painted Tiles
- Bespoke Hardwood Cabinetry
- Original Tiller and Leeboards
- Teak Deck Seating
- Picturesque Saloon (Lounge, Kitchen, Dining Area)
- Cast-Iron Range Cooker
- Central Heating
- Historic Suffolk Location
- Year-Round Accommodation
- Free Wi-Fi & Bike Use

Twée Gebroeders is moored on the River Deben by the historic Tidemill in Woodbridge, Suffolk. She is the perfect romantic bolthole for couples, with room for a couple of kids too.

Built in 1897, she measures 64ft in length and offers guests the ultimate quirky romantic break. Enjoy a glass of wine on deck or walk into this quaint market town for a choice of fabulous pubs and restaurants. Comfy, cosy cabin bedrooms. Fabulous views from the portholes. No expense has been spared in the restoration of this beautiful old barge.

Wonderful river walks from your gangplank.

“Twée Gebroeders is just wonderful, with every detail so well thought of. Couldn’t ask for a better weekend break, so much needed especially in the current times. Can’t wait to try the other barge and all the cottages.”

Jenny, James and Ally (6 years old)



Woodfarm Tuscany

Let's talk about COVID for a mo. The pandemic forced us to put on hold the completion of our farmhouse in Tuscany, for very obvious reasons.

We were due to start welcoming guests in the Summer of 2020, but of course that all went by the wayside, as did finishing the work! As we go to print the house is finished, but not furnished (as we can't get over there). We hope that 2022 will see our first guests enjoying these magnificent views. Please check the Woodfarm Barns website for progress.

I have two favourite places on this little planet of ours; Suffolk and Tuscany. Having built the business in Suffolk, firstly on dry land and then onto the water with our Barges, I've now expanded it just a little further; to the heart of a Tuscan hillside in beautiful Italy.

'Trebbio', Piazza Di Brancoli, Lucca, Tuscany. Trebbio is a delightful little country house with breathtaking views across the Garfagnana valley, and the river Serchio; just 20 minutes north-west of Lucca and only 45 minutes from Pisa Airport.

A holiday or short break here is all about the scenery, food and drink! We have the most amazing location from which to explore this stunning area, as well as enabling you to enjoy some true relaxation on your Tuscan terrace.

I viewed a lot of houses in the area and then ended up buying the first one I'd seen! The views were simply love at first sight, and you're going to love it too. The house itself required a complete renovation, and some. But then, I'm used to that!

Food, wine and that Tuscan view

This Cottage is all about the incredible vista. To go with it, we have a spacious terrace in the garden, which will have comfy seating, pizza and bread oven, and a BBQ. From there you can enjoy your morning coffee, continental breakfast, a leisurely lunch, or watch the sun go down as you breathe in the aromas from your baking.

Trebbio is a cosy place to stay with all the luxuries you would expect from Woodfarm, in a location giving you easy access to the most popular parts of Tuscany; with or without your dogs.





To book call **01449 710032** or visit us online at **woodfarmbarns.com** | 15

Suffolk Towns and Villages

Framlingham

The town of Fram (as it's known locally) is a must-visit if you're an avid market-goer. You'll find all sorts of foods, gifts and other wares! Framlingham Castle is also a very popular historic site for tourists, and the surrounding Mere is a haven for wildlife. It's great for a walk, and it's also dog-friendly! And no mention of Fram would be complete without a nod to its most famous son,



Thorpeness

If you like unspoilt (stoney) beaches, quaint tea rooms, antiques and great pub food, then look no further than Thorpeness. It's a small village nestled into the Suffolk coastline. Oh, and it also has the added bonus of a massive boating lake!

Dunwich

If you're after a day out or just a walk with the dog, Dunwich is an excellent place to visit. The village is just a short drive away from our Barns and Barges. You can find medieval ruins dotted around the village, see amazing flora and wildlife along Dunwich Heath, and walk along the dog-friendly beach with a locally-made ice cream in hand.

Southwold

Southwold is a must-see destination when you are on a Woodfarm break here in Suffolk. It's one of those great places that us locals like to keep going back to as well! Here you'll find a superb choice of restaurants, pubs, shops and stunning sea views, as well as a historic pier brimming with eccentric British seaside fun. Southwold is such a great place to take a stroll overlooking the sea at any time



“It was like exploring a place that you have seen in a dream, where everything is just where you expect it and yet everything is a surprise.”

Arthur Ransome,
Swallows and Amazons

Bury St Edmunds

A bustling market town in the heart of Suffolk, known for excellent shopping, consisting of both national brands and independent boutiques, as well as a fantastic range of food outlets. Having been the home of King Edward VI, it is filled with historic culture and fascinating monuments, including the stunning Abbey Gardens, which offer medieval ruins, an aviary, tennis courts and lots of space for picnics!

Long Melford

Long Melford is a fantastic large village, a short drive from Woodfarm HQ. It is undisputedly one of the most stunning villages in Suffolk. Maybe in the whole of the UK too! The village is well worth visiting for the many pubs, restaurants, art galleries and antique shops on the main street alone. However, there are other reasons so many people choose to make Long Melford a part of their visit to Suffolk, including the historic Melford Hall and Kentwell Hall.

Lavenham

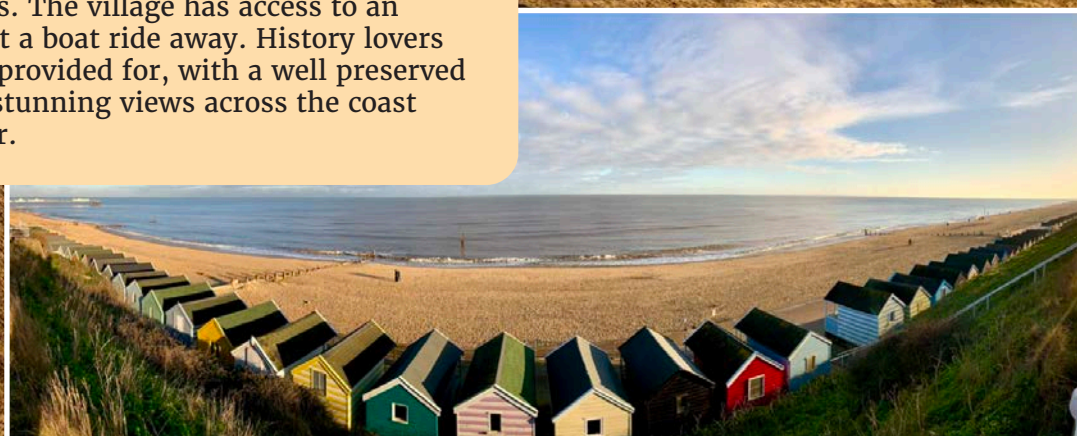
A medieval village situated right in the heart of Suffolk, Lavenham is a beautiful sight to behold. We think a visit to Lavenham is well worth your time. Packed full of interesting architecture, friendly and authentic pubs, stylish restaurants and antique shops. Lavenham has a wide selection to fit all budgets and time restraints and is one of the most ‘Instagrammed’ villages in the UK.

Orford

Those who enjoy both history and nature will adore Orford. The fact that it also has some wonderful places to eat makes it a dream location for many Woodfarm guests. The village has access to an RSPB reserve just a boat ride away. History lovers are wonderfully provided for, with a well preserved Castle, offering stunning views across the coast from its top floor.

Aldeburgh

This ancient seaside town has it all: beautiful beaches, locally owned and managed shops, and a stunning array of culture. The museum features 200 years of history, including the Red House where the iconic Suffolk composer Benjamin Britten and his partner, Tenor Peter Pears, once lived and worked. Aldeburgh is a short walk from Snape Maltings.



Woodbridge

A charming, vibrant market town, Woodbridge is a favourite amongst both locals and visitors, and is the home of our Barge Twee Gebroeders. The town sits on the banks of the River Deben and is easily accessed by car along the A12, or by rail.



In the town centre, you'll find an excellent selection of independent shops, quirky cafes and restaurants and frequent local markets. Keen to retain its historic qualities, the town features well-preserved architecture, including the renowned Tide Mill, which has been preserved for over 300 years, and provides a wonderful backdrop for our Barge, moored nearby, as shown in the photo on the left!

Just across the river, is Sutton Hoo, a National Trust site, where an Anglo-Saxon ship burial was discovered in the 1930s - one of the UK's most exciting archeological discoveries, and the subject of the Netflix film 'The Dig', starring Ralph Fiennes. You can spend an entire day exploring this awe-inspiring site, and dogs on leads are also welcome.

Woodbridge & Snape

Home to our beautiful Dutch Barges

Snape

Snape is a small village with a big character! Steeped in history, having been inhabited by the Romans and later, the Anglo-Saxons. The village was once a centre for the production of salt, fertiliser, sugar beet and malted barley. In fact, the Maltings is still active today, but as a tourist centre and classical music entertainment venue.

You'll find our Barge Onderneming moored on the River Alde alongside Snape Maltings. It's the perfect place to stay for some retail therapy and exploring this part of the coast. It may not take long to walk from one end of the village to the other, but along the way you'll find beautiful river and countryside views, boutique shops and a handful of cosy pubs serving fantastic local produce.

If you plan your trip to Suffolk around one of Snape's food or music festivals, you'll be in for a treat. The Aldeburgh Festival of Music and the Arts is an event founded in 1948 by British composer Benjamin Britten, celebrating visual and performing arts. The festival treats attendees to a bountiful programme of events, bringing the village to life each year.

Similarly, the annual Aldeburgh Food and Drink Festival is an important occasion in the Suffolk event calendar. Bringing together the finest of Suffolk's food and drink producers, the festival is a must-see for foodies!



Designated Areas of Outstanding Natural Beauty

We are very lucky to have two Areas of Outstanding Natural Beauty (AONB) for our guests to enjoy. An AONB is land protected by the Countryside and Rights of Way Act, which protects the land to conserve and enhance its natural beauty. These areas are perfect for undisturbed rambling with your partner, your dog, or by yourself.

Suffolk Coast & Heaths

This area was designated in 1970, with the purpose of conserving and enhancing the habitats and biodiversity of the special heathlands, woodlands, estuaries and coast. The area spans much of the east coast of Suffolk, from Felixstowe Ferry to Benacre National Nature Reserve, as well as the wonderful RSPB Minsmere and the banks of the Rivers Orwell and Stour. All in all, this AONB covers 155 square miles of tranquil and unspoilt landscape.

The Suffolk Coast & Heaths AONB encompasses incredible heritage sites, including Sutton Hoo near Woodbridge; Greyfriars Priory in Dunwich; Orford Castle in Orford; Saint Peter's Church in Westleton; and Mistley Towers in Mistley.

There are also various attractions for all ages, including the Suffolk Punch Trust, which breeds endangered Suffolk Punch horses and other rare breed animals; Southwold Pier, located in a beautiful coastal town with plenty of seaside entertainment; and Landguard Fort in Felixstowe, an historic coastal defence surrounded by a nature reserve.

Dedham Vale

Located on the Suffolk–Essex border, Dedham Vale spans from Cattawade on the River Stour in the east, to Bures in the west. The River Stour runs through the AONB, providing a thriving habitat for unique river flora and wildlife.

Part of this area is known as 'Constable Country' for its links with romantic landscape painter John Constable, who painted many scenes here during the 1800s. Flatford Mill and Willy Lott's Cottage, two Grade I listed buildings that appeared in many of Constable's works, are well-preserved and still visible today.

Avid walkers will enjoy the Stour Valley Path, a sixty-mile route which meanders through the vale. However, if you're short on time or you don't want to walk far, the popular Dedham to Flatford circular walk is around four miles in length and allows you to take in beautiful scenery as well as visit a delightful village and hamlet.

Woodfarm Barns & Barges

Your home from home

We can't guarantee the weather but we can guarantee you will be made to feel welcome when you arrive!

Our Visit England Gold Awards, hundreds of Five Star reviews on Tripadvisor, Facebook and Google, plus thousands of humbling testimonials from previous guests are proof of that.





Your Suffolk Breakfast Basket

One of the main things that our guests are wowed by is our scrumptious breakfast basket. We source local produce where possible, working with independent farm shops, butchers and delicatessens, and also supply plenty of tea, fresh coffee and sugar.

Included with your stay; eggs, bacon, mushrooms, tomatoes, bread, butter, milk, jam and marmalade, fresh fruit and cookies.

Veggie, Vegan and Gluten Free options too.

Technology

- Free WiFi
- Flat screen TVs
- Smart TVs/DVDs
- Bluetooth speakers
- Digital alarm clocks

Bathrooms

- Powerful showers
- 100% Cotton Towels
- Quilted Toilet rolls
- Luxury hand soaps
- Shower gels
- Shampoo

Kitchens

- Fully-appointed
- Luxury hand soaps
- Tea towels
- Cooker
- Microwave
- Cutlery
- Crockery
- Cafetieres
- Pots and pans
- Roasting/baking tins
- Utensils
- Salt and pepper
- Oil and vinegar

Bedrooms

- 400 thread-count Egyptian Cotton Bed linen
- Duvets and covers
- Pillows and cases
- Hotel quality Mattresses
- Mattress Toppers
- Bedside tables
- Bed throws

Gardens at the Barns

- Fully enclosed
- Patios
- Tables and chairs
- Outside lights
- Private Hot Tubs with most properties

Misc.

- Off road parking
- Travel cots
- High chairs
- Irons and boards
- Clothes airers
- Laundry facilities
- Tourist information



Local Walks

Suffolk is a dog-walkers paradise

The Crowfield Church loop:

This walk is two minutes away from our Barns by foot. It's a circular trail which is great for a quick morning stroll, to get the blood pumping, or getting an extra dog walk in before you settle in for the evening.

Here are just a few of the walks that are popular with our guests, and their dogs! These are all within easy reach of your Woodfarm base.

Hoppit Wood & Lake and Hoggs Kiss Meadow, Debenham:

10 minutes away from our Barns by car, this walk is a real hidden gem in the Suffolk countryside. The area features an 11 acre wood and a 7.5 acre meadow planted by the local

Broom Hill, Coddendam:

Located 9 minutes away from our Barns by car, or on foot via a 3 mile lane walk, this trail winds through the woods from Coddendam to Hemingstone. In total, the walk takes around 45 mins to an hour, but can be extended if you keep heading East.

Needham Lake, Needham Market:

12 minutes away from our Barns by car, Needham Lake is a popular countryside attraction, based just outside the town of Needham Market. The lakeside walk on the surfaced path takes

Thorpeness:

A 12 minute drive from Onderneming. Thorpeness is a beautiful village where you can access a 2.5 hour circular walk to Sizewell that features unbeatable coastal views.

Woodbridge:

Start from Twee Gebroeders and walk along the river Deben to begin this walk. The trail then turns left at the Granary Yacht Harbour and takes you back alongside the town centre in a short circular walk back to the Barge.

Rendlesham Forest, Woodbridge:

A 10-minute drive from both of our Barges; Twee Gebroeders and Onderneming, Rendlesham Forest is 1,500 hectares of mixed woodland, with a variety of trails for walkers and

Iken Cliff:

Just a four minute drive from Onderneming, this circular five mile walk begins at Iken Cliff and takes you along the River Alde, through Tunstall Forest and Snape. You can walk it directly from Onderneming too.

Snape:

'The Sailor's Path' is a wonderful way to explore Snape and the surrounding area directly from Onderneming. Take the 2 hour walk to Aldeburgh and enjoy legendary fish and chips before heading back 'home'.

Dog-friendly Beaches

If your dog loves the feel of sand on their paws and a good splash in the water, then there are plenty of places to do so along the Suffolk coast!

From October through to April there are usually no dog restrictions in force on many of Suffolk's beaches. Restrictions are in place on some beaches from 1st May through to 30th September. Here are just a few of our favourite beaches, all within easy reach of our Barns, Cottages and Barges.

As always when visiting any new area, watch out for hazards that can harm your dog. If you need any immediate assistance, we have a list of nearby vets available.

Dunwich:

The beach is dog-friendly all year round; however, there are restrictions in place on the nearby Heath during bird-nesting seasons.

Southwold:

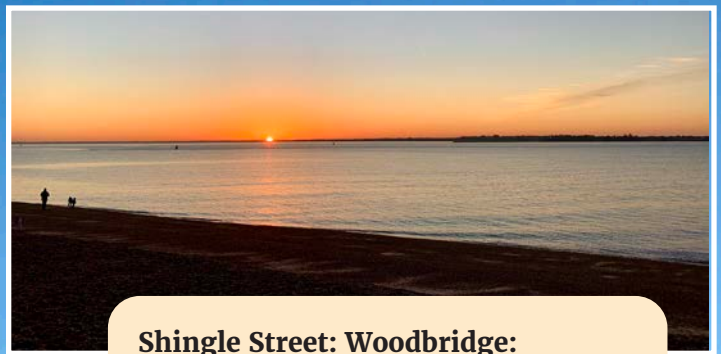
Restrictions in summer; however, the beaches to the north and south are dog-friendly all year round.

Walberswick:

Dogs are allowed on this sand and shingle beach all year round.

Felixstowe:

Restrictions in summer. The beaches either side of the main beach are open to dogs all year round, but they must be on leads.



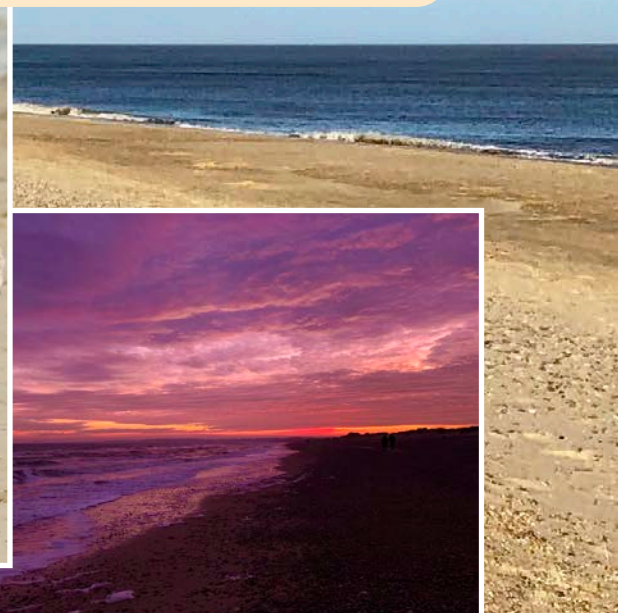
Shingle Street: Woodbridge:
Dog-friendly all year round.

Thorpeness:

The beach features a steep shelf of shingle that leads down to a bank of sand at low tide. It is open to dogs from October to April.

Aldeburgh:

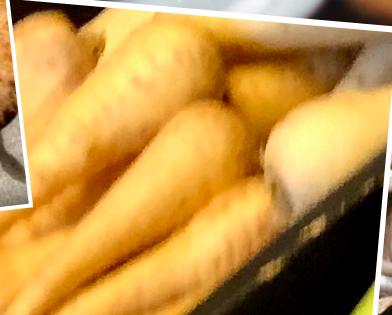
Restrictions in summer; however, there is a mile of year-round dog-friendly beach to the north of the town towards Thorpeness.




Eat, Drink and be Merry!

What says “Staycation” more than heading to a fabulous pub for a bite to eat, or picking up some great farm shop foodie treats to enjoy back at base?

We are so blessed to have a wide choice of superb Suffolk Pubs, Restaurants, Coffee Shops, Delicatessens and Farm Shops on the doorstep of the Barns & Cottages, and both Barges.



Whether you fancy nipping in for a quick pint or coffee in a dog-friendly place to eat, or you're looking for a romantic meal, there are some great places to choose from. We've written extensively about many of them in our Blog pages on both websites.



We source much of your Breakfast Basket produce from local Farm Shops, and independent food and drink retailers, and you can treat yourselves during your stay too.

From picnics to cosy dinners in your Barn, Cottage or Barge, with an array of fresh local produce, as well as many well known food and drink brands. From Stokes to Scarlett & Mustard, from Adnams to Aspalls, we have info on all these and more in your Welcome Folder and on both websites.



Where Do We?...

Your online guide to Suffolk!

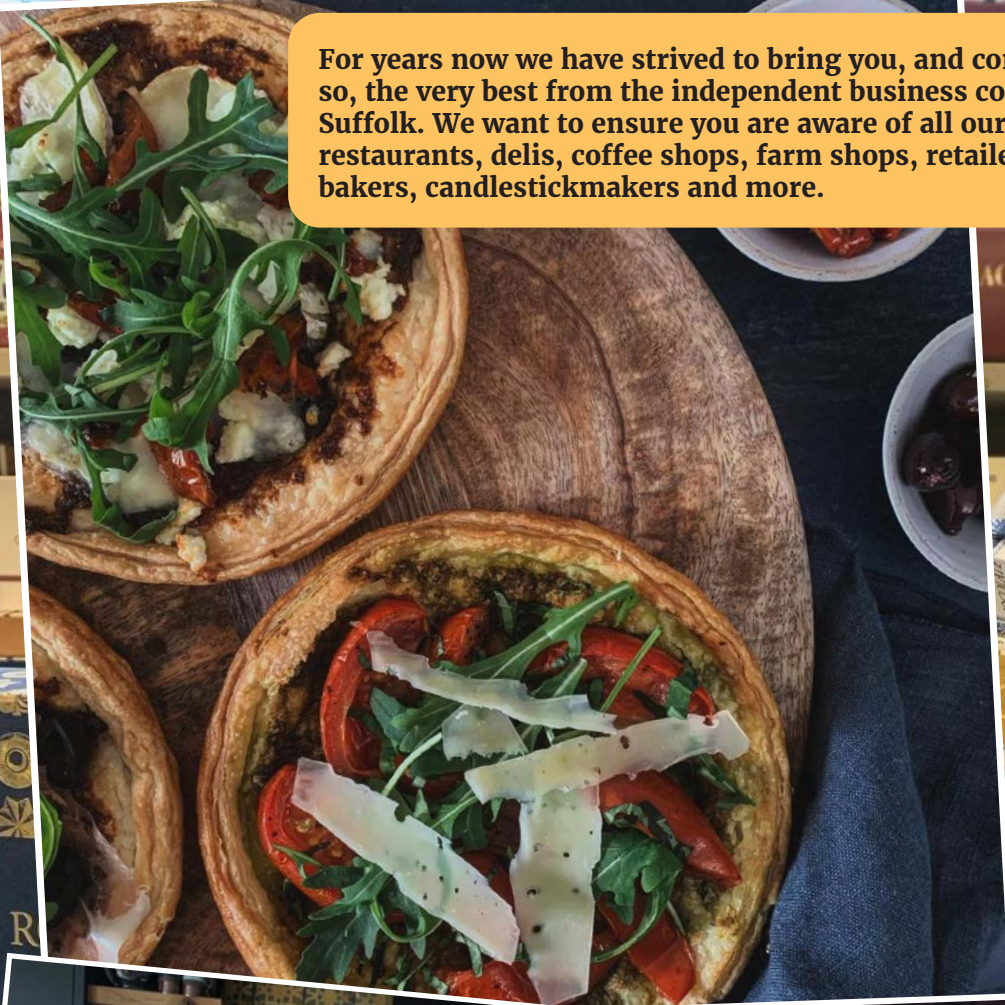
In addition to letting you know about the great places for 'Food, glorious food', we have an entire website especially to advise you on where to Eat & Drink, Walk the Dog, See the Sea, Stay, Cycle, Shop, Visit, or simply Have Fun.

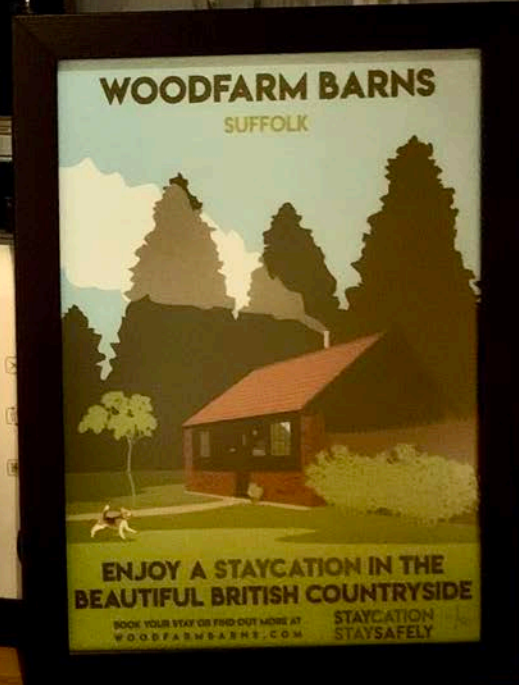
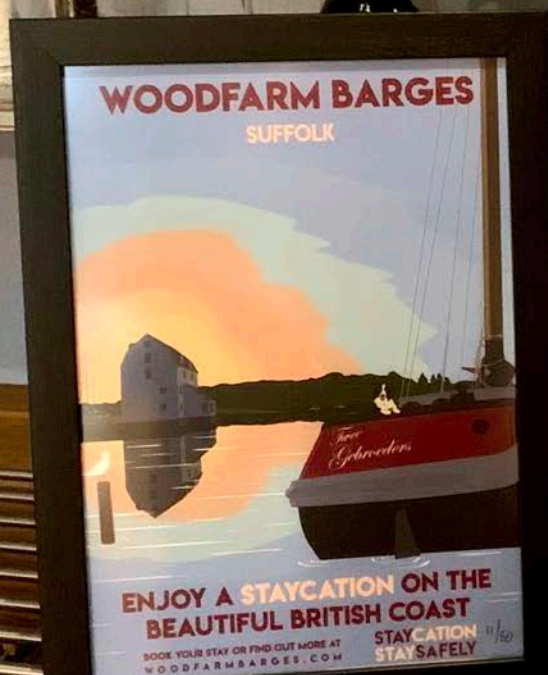
We have developed this website specifically for our guests, to ensure you get the most out of your time with us.

Visit wheredowe.co.uk

Preferred Partners

For years now we have strived to bring you, and continue to do so, the very best from the independent business community in Suffolk. We want to ensure you are aware of all our favourite pubs, restaurants, delis, coffee shops, farm shops, retailers, butchers, bakers, candlestickmakers and more.





Take Woodfarm Home

We have a bunch of Woodfarm branded things for you to take home as a reminder of your break. We try to make these practical, everyday items that you can still use after you've said goodbye to us (temporarily, we hope!).

We have mugs for your tea and coffee, travel sweets to enjoy on the go, dog poop dispensers, trolley coins/key rings, and fridge magnets.

We sincerely hope that you will get use out of these, and wave them under the noses of your friends and family whilst uttering such subtle phrases as "go and stay here, it's awesome", or "your life will be incomplete without a stay with these guys". If you break or lose any of them, just let us know and we'll rush another over to you! I say rush, but that's down to Postman Pat.



